

2007 Toyota Prius Seat Cover

Front Seats



Before



Done

Rear Seats



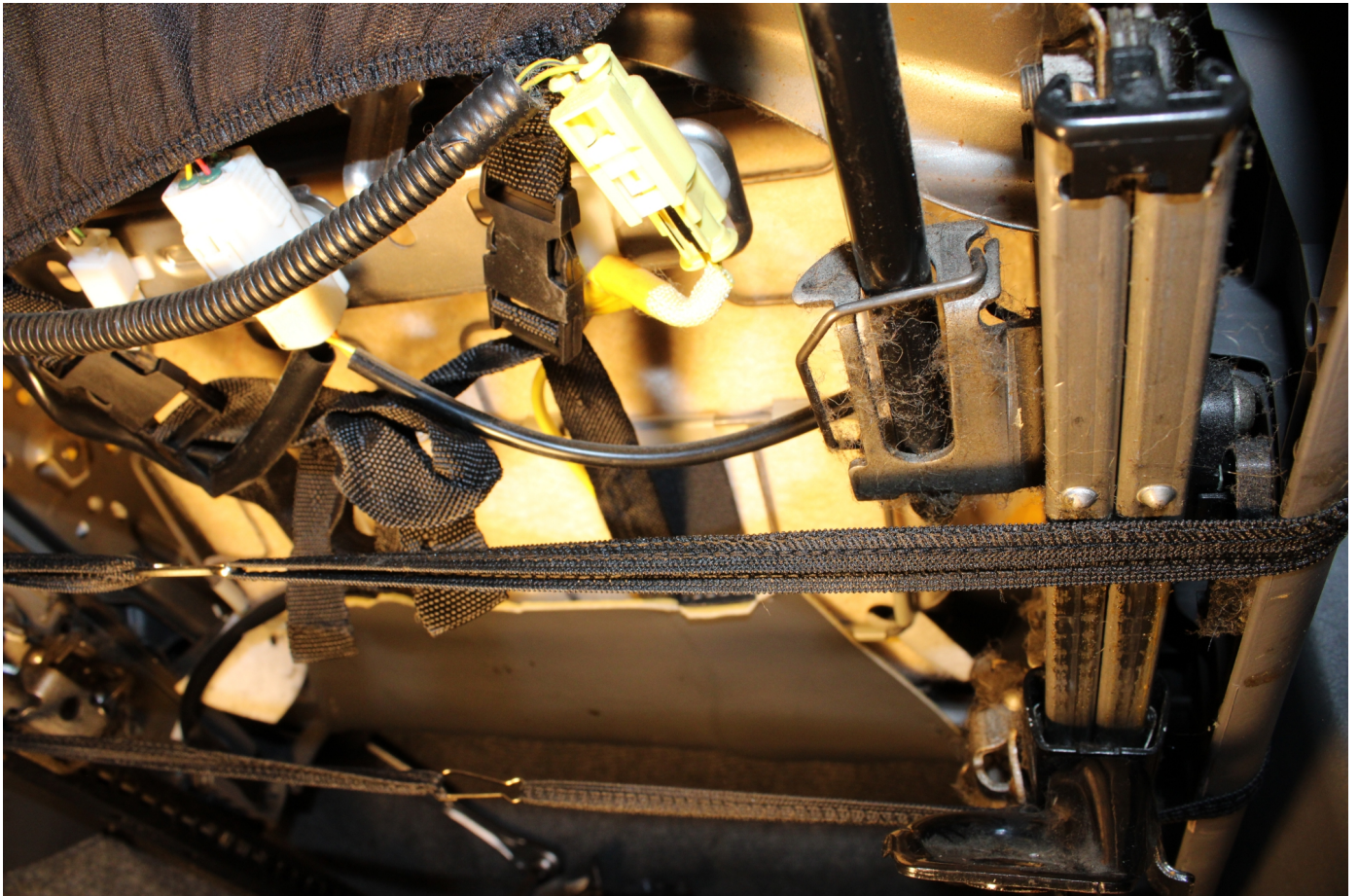
Before



Done



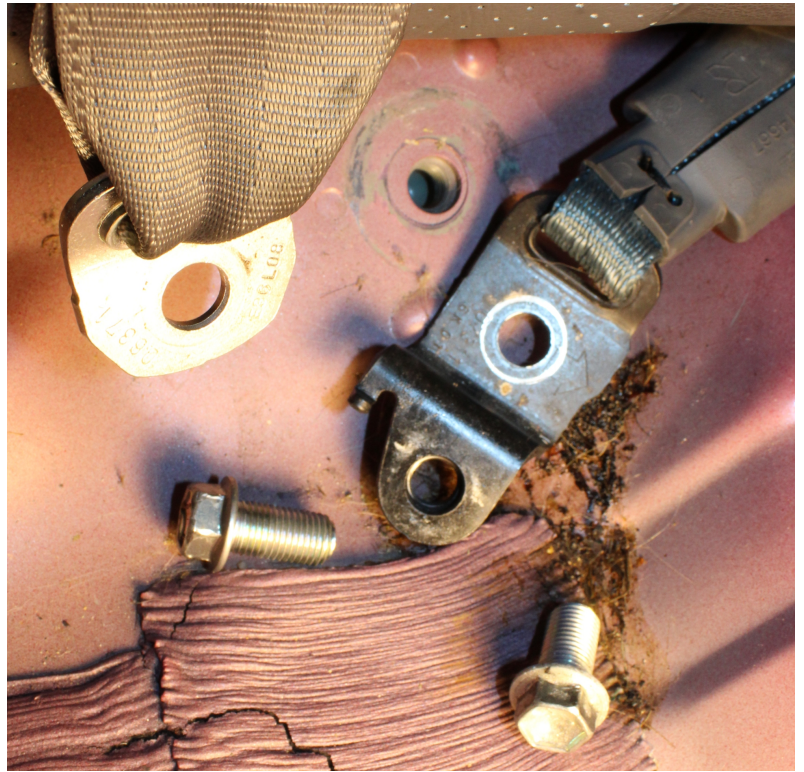
Front seat detached and slanted



Cross straps with adjustable buckles (Vertical) and elastic loops using metal clips (Horizontal)



Rear seat detached



No locking hole in chassis (Design flaw) for middle rear safety belt bridge anchor makes arbitrary rotation



Cross straps with adjustable buckles (Vertical) and elastic loops using metal clips (Horizontal)



Divided rear seat can be covered beautifully by using a three portion dividable covers with zippers (Excellent!)

Installation Manual

Video instructions are available at <https://www.fhgroupauto.com/installation>

ATTENTION: DO NOT cut anything before you are completely sure the seat cover is aligned and fitted to your satisfaction.

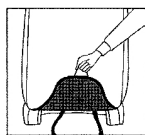
NOTE: All airbag-compatible covers feature specially engineered stitching along the side seam. This unique detail allows your airbag to deploy without any resistance and assures the car's safety features function as designed in case of an accident.

Front Seat Cover

1. Fit the bucket cover over the seat and slide it down gently; pulling or tugging too hard on the cover may cause the airbag-compatible seam to rip. To ensure the cover is properly aligned, double-check that the cover's airbag tag is on the same side of the seat as the airbag (in most cars, the airbag faces the car door).

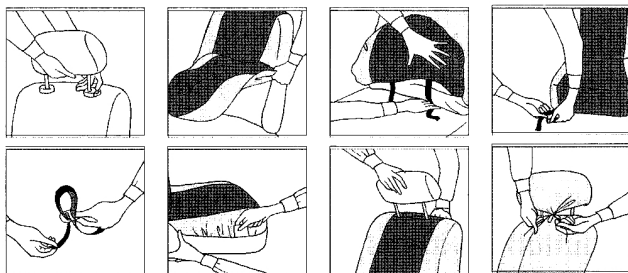
If you're unable to slide the cover on, remove the headrest first by pushing its release button. You may also need to remove the armrest (instructions for removal are included at the end). To reinsert the armrest, you'll need to cut a small hole along the side of the cover where the armrest is located (the material will not tear).

2. Once the cover's backrest portion has been fitted, locate the straps in the cover's center and push them through the seat crevice. Tighten the straps at the bottom of the seat.
Optional: If your front seat's center crevice is blocked by a flap, pull up the flap by locating the strap on the bottom rear of the seat.



3. Fit the cover's base over the seat. Secure it by connecting the elastic loops under the seat using the supplied snaps or by tucking the mesh cloth underneath the seat.

4. Reinsert the headrest and cover it with the headrest cover. Secure the cover by fastening the elastic straps inside. Close the hook and loop opening located at the top of the seat cover (make sure you peel off the hook and loop)

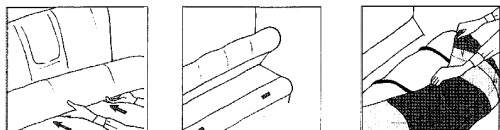


Rear Seat Bottom Cover

Note: we suggest lifting your seat for an easier installation. To lift up your bench seat, locate the control on the bench and push to yank it up.

1. Locate the rear seat bottom cover in your package: it is labeled with a "Bench Bottom" tag on the cover's inside border (it looks similar to the backrest cover except it's smaller in size and affixed with 3 pieces of mesh cloth).

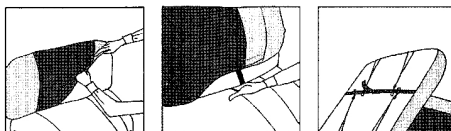
2. Fit the cover over the seat and secure it by fastening the straps on the bottom (for an extra snug fit, fasten the cover's elastic loops together using the supplied snaps). The straps will stay hidden underneath the seat. You can also secure the cover by tucking the mesh cloth underneath the seat.



Rear Backrest Cover

1. Locate the backrest cover: it is labeled with a "Bench Backrest" tag on the cover's inside border.

2. Remove the seat's headrests. If your headrests aren't removable, cut a line along the edge of the backrest cover to install (the material will not rip). For an easier installation, we also suggest removing the seat.



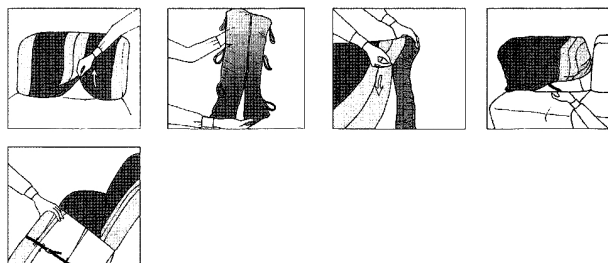
3. Fit the cover over the backrest. Push the cover's bottom straps through the seat crevice towards the back. Fasten the straps from the back side of the bench (as an optional step, connect the loops using the supplied snaps). You can also secure the cover by tucking in the mesh cloth on the side of the seat.

To Split or Fold Your Rear Bench

Based on the position of your bench's split, unzip the corresponding zipper on the backrest or bottom seat cover: this will allow you to fold your bench up and down. Use the included mesh cloth to cover the seat's exposed middle/side edge.

Once the cover is installed, undo the middle zipper to fold the bench's armrest/cupholder down (make sure to unzip from the bottom up).

If your bench cover is too long, unzip and remove the cover's middle section to shorten. If the bench cover is too short, call customer service at 1-800-928-5518 to purchase an additional extension piece.



Rear Headrest Cover

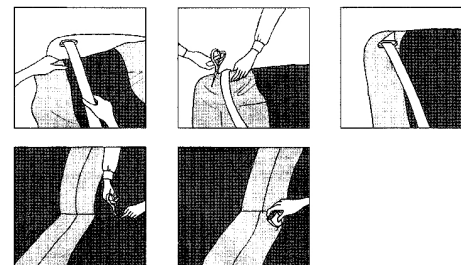
Fit the headrest cover over the rear bench headrest. Cut two tiny holes on top of the backrest cover where the headrest needs to be reinserted. DO NOT cut anything before you're completely sure the backrest cover is aligned and fitted to your satisfaction (as an optional step, stuff the material underneath the rim for a smoother look). Reinsert the headrest and fasten the cover's straps to secure the headrest cover.



Note - Rear Seat Belt Adjustment

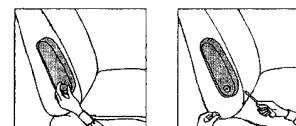
Backrest: Make sure you pull out the seat belt first. Then fit the seat cover over the backrest, making sure the seat belt rests on top of the cover and not beneath. Cut a slit along the cover where the seat belt will come out.

Seat: Double-check that the rear seat covers are fitted to your satisfaction. Then cut two small holes where the belt buckles are located and pull the belt buckles out. The material will not rip.



Bucket Seat Armrest

To remove: locate the round cap at the end of the armrest. Remove the cap and undo the screw inside to take out the armrest. After you have installed the seat covers, reinsert the armrest and tighten the screw.



Although no instructions/directions here, detach seats. Cross straps with adjustable buckles and elastic loops using metal clips to cover seats steadily.