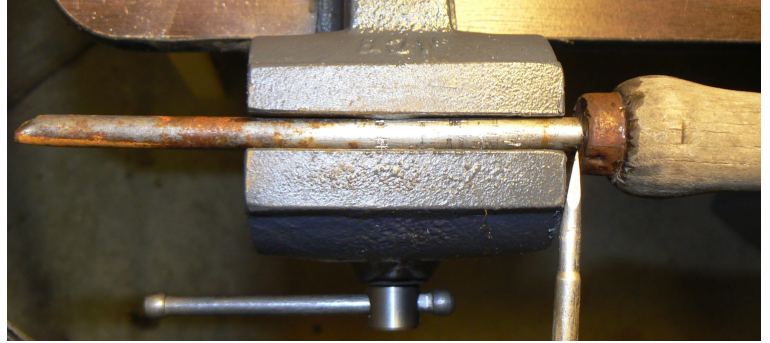


Tips Weed Sticker

Front edge of weed sticker wore off by frequent sticks to the ground for weed removal. The metal portion was replaced by relatively new weed sticker with somewhat short red handle keeping longer wood handle.



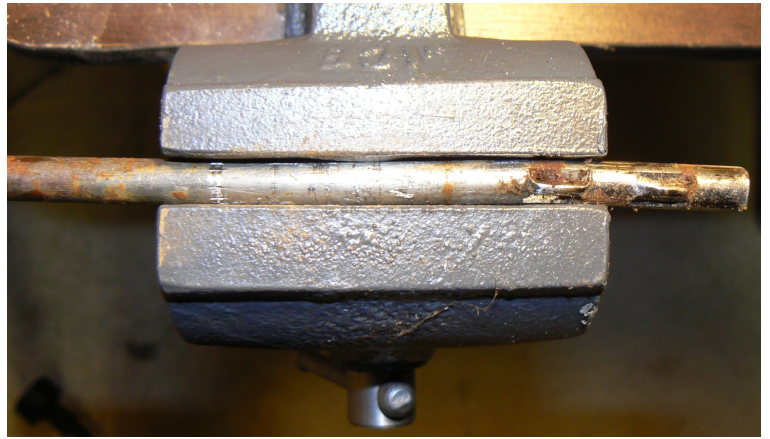
Metal Weed Sticker Portion Worn off (Up Most)



Removing Metal Weed Sticker Portion Fixing by Vise



Removing Metal Weed Sticker Portion Fixing by Vise



Removed



Ring, Wood Handle & Metal Sticker to be Built



Done (Upper 3 Pieces Thrown out)