











1,000 Pieces Jigsaw Puzzle (Vincent van Gogh Irises; 70cm x 50 cm, 27.5" x 19.5")





Focusing characterization is hard to define on this jigsaw puzzle because of no texts/lines and its ambiguous coloring. Upper to lower paint brush touch by Gogh may be one of the clues.

Kinds of pieces

				
No head	One head	Two heads 180°	Two heads 90°	Three heads
Normal Pieces				

				
No head	One head	One head corner	Two heads 180°	Two heads 90°
Side Pieces				

Rotation Angles

			
0°	90°	180°	270°
Rotation Angles (Clockwise; Two heads 90°)			

Piece placement alignment

As photo below, piece rotation are limited to only four angles (0° , 90° , 180° , and 270°). This is the most influential clue. If various piece angle rotation is allowed, I had to give up at the initial stage.



Pieces on square mesh of X-Y orthogonal coordinate system

History



Side pieces placement completed (Most pieces are still placed out of the battle field)



6/4/22



6/7/22



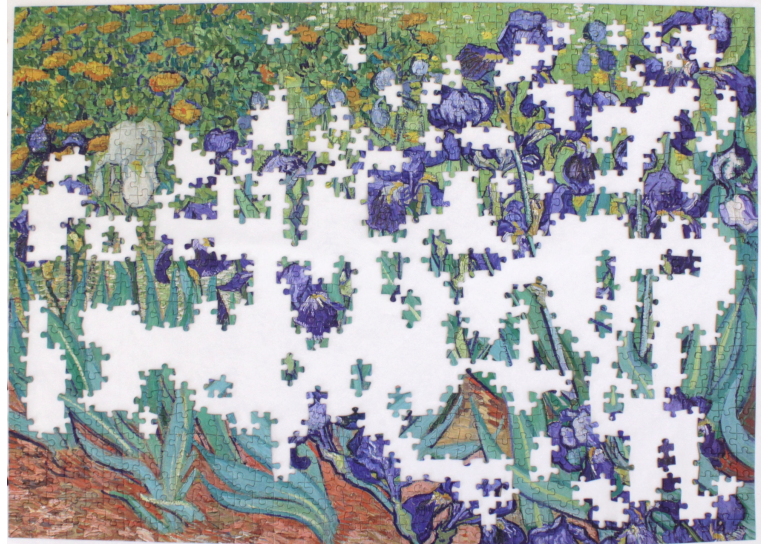
6/14/22



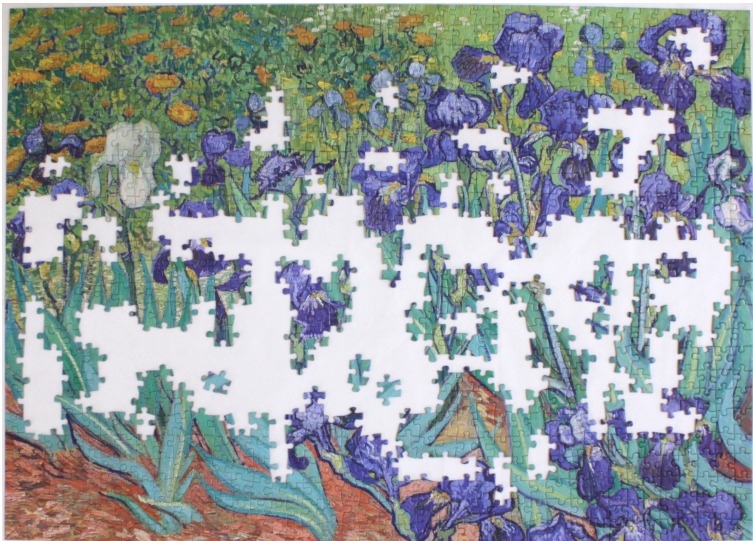
6/24/22



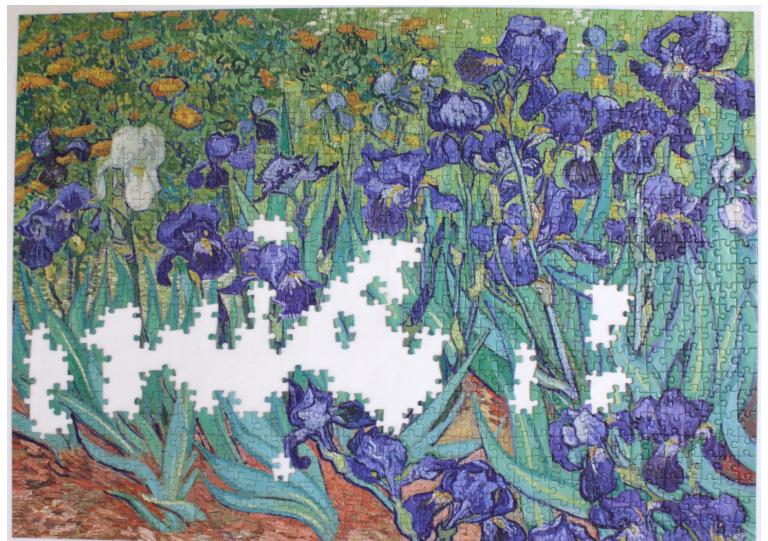
6/29/22



7/1/22



7/3/22



7/5/22



Completed (7/5/22)

Smaller the number of pieces unplaced, faster the placement speed. The shape of the pieces becomes the most efficient clue at the final stage.