

## 1993 Mercury Sable Wagon Keyless Entry System



A keyless remote controller box can be stored in empty pocket inside door panel just below unlock/lock switch. To detach door panel, simply remove three phillips screws shown by red circle.



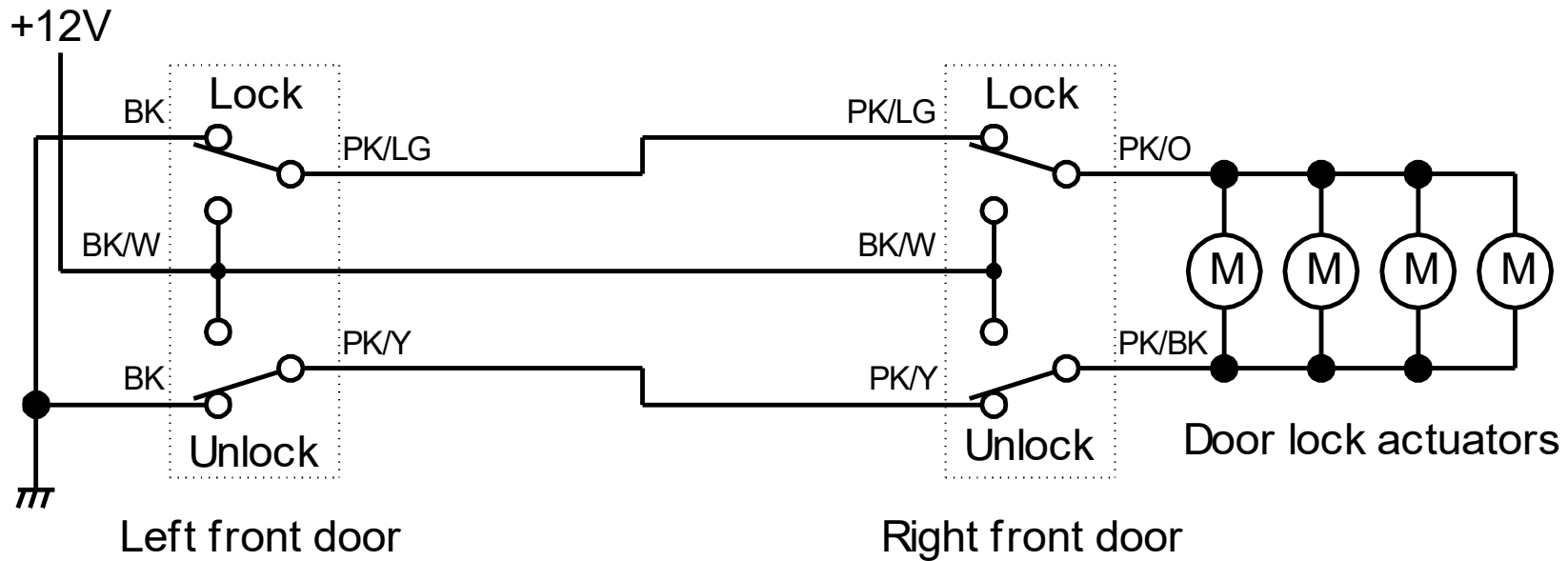
Keyless entry remote



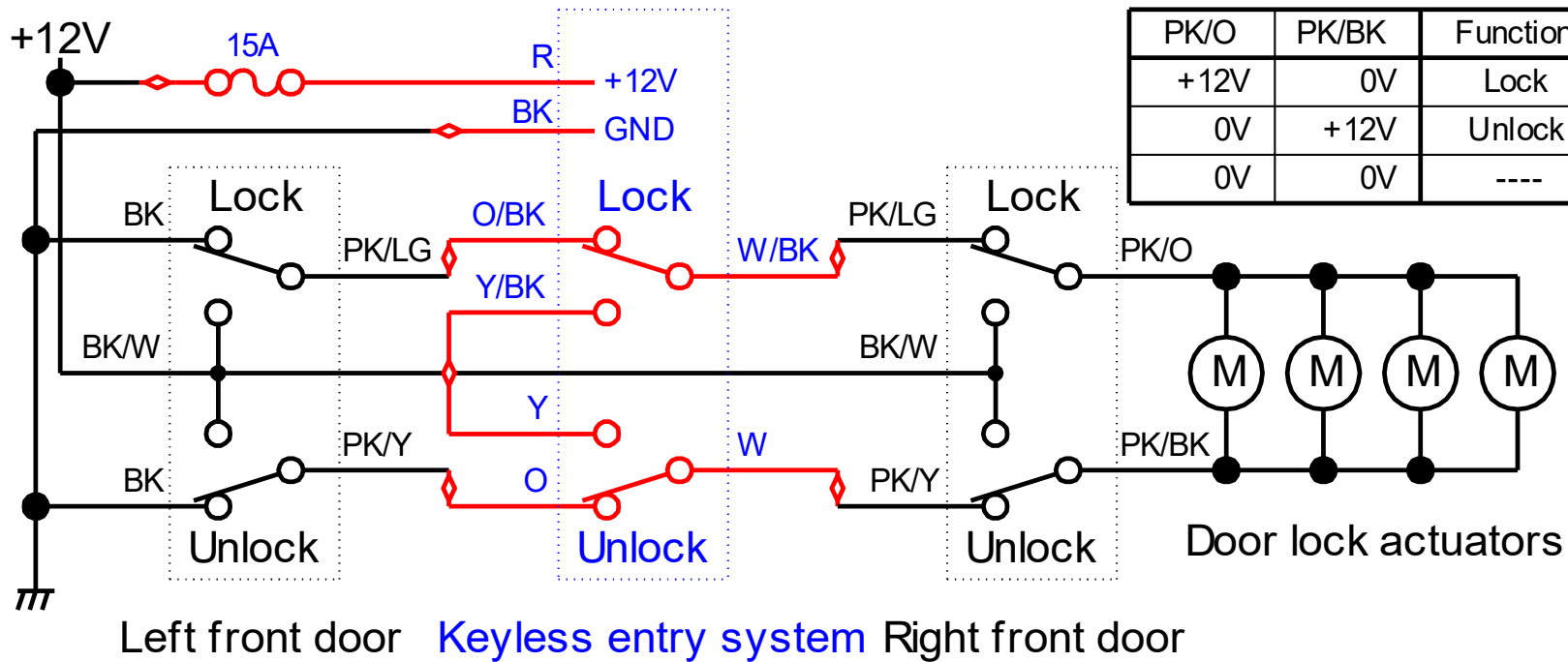
1/4" socket & screwdriver Hex mini ratchet wrench (4" length)



Wired & Stored (Of course, working)



Original wire connection



Wire connection to/from keyless entry system box appended

# Keyless Entry System Operation Manual

## **LOCK**

Press Lock on the remote control. Direction light will flash once and the door will be locked. LED indicator will start to flash.

Note: When power window signal is programmed as Siren Output, the siren will beep once after door is locked.

## **UNLOCK**

Press Unlock on the remote control. Direction light will flash twice and the door will be unlocked.

Note: When power window signal is programmed as Siren Output, the siren will beep twice after door is unlocked.

## **TRUNK RELEASE**

Press and hold Trunk button on the remote control for 3 seconds, direction light will flash twice and the trunk will be released.

Press and hold Unlock button on the remote control for 3 seconds, direction light will flash twice and the trunk will be released.

## **CAR FIND**

A. Press Car Find button, the direction light will flash. Press any button to exit Car Find mode. Press Unlock button will disarm the system (3-button remote control does not have this feature.)

B: Press LOCK button and after 4 seconds press it again, system will enter Car Find mode.

Electronic / Vacuum Central Lock Option

Electronic central lock is 0.5 seconds and 5 seconds for vacuum central lock.

Factory default is electronic central lock.

## **POWER WINDOW**

Press the LOCK button on the remote control, the main unit will give a 25-second power window negative signal to rise the windows.

Auto Central Lock

ACC turn to ON: central lock will lock automatically.

ACC turn to OFF: central lock will unlock automatically.

ACC turn to ON, press LOCK button the remote control: central lock will lock automatically.

ACC turn to ON, press UNLOCK button the remote control: central lock will unlock automatically.

## **LEARNING CODE**

Hold and press the learning button inside the main unit, the direction light will be on and then it will enter the learning mode.

Press any button on 1<sup>st</sup> remote control, the direction light will flash once means the learning code is successful.

Press any button on 2<sup>nd</sup> remote control, the direction light will flash once means the learning code is successful.

After 2 remote controls are successfully learned, the system will exit learning mode automatically.

## **PROGRAMMING**

1. Power window / Siren signal feature programming

Within 10 seconds that the main unit is connected to the power, hold and press the LOCK or UNLOCK button on the remote control to program the features.

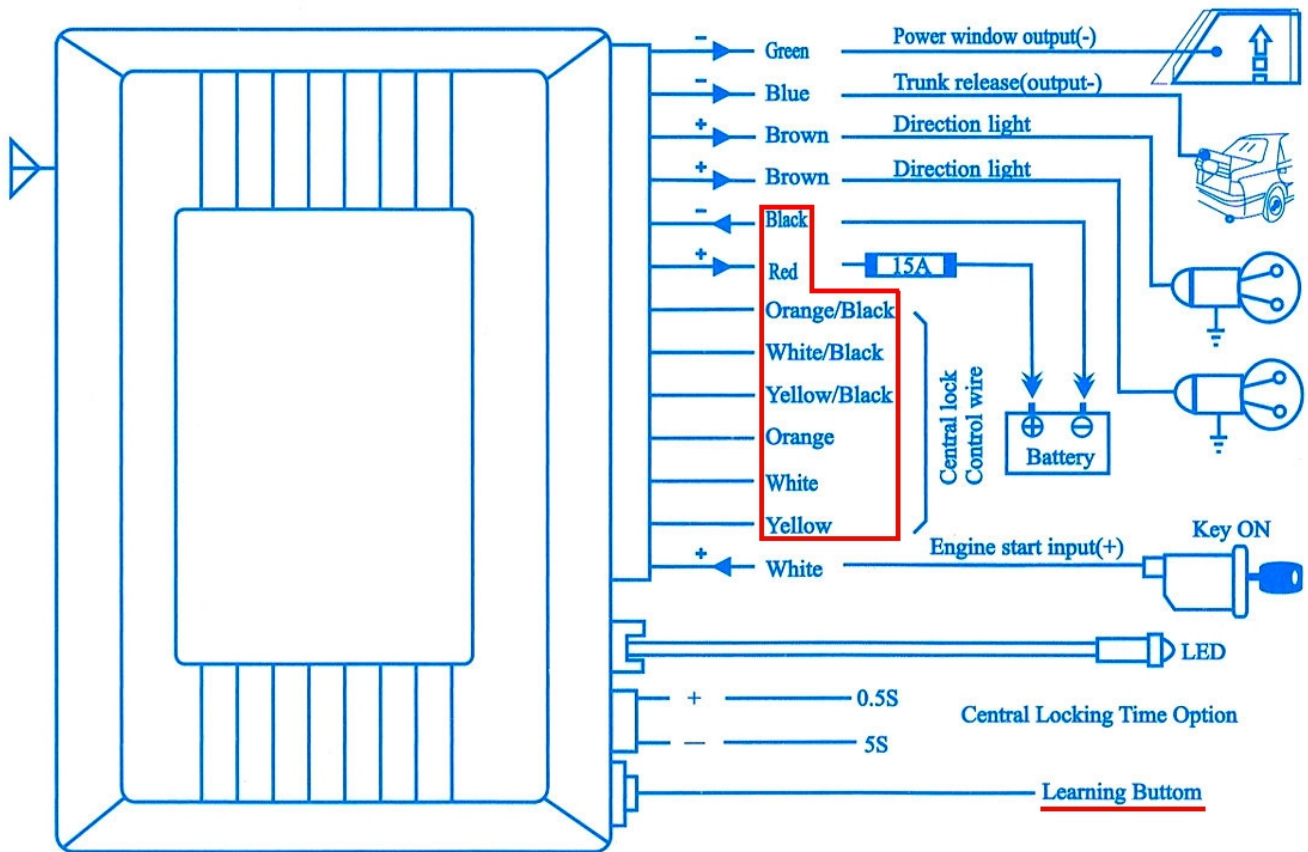
LOCK: power window negative by default

UNLOCK: Siren negative

2. Auto central lock programming

Within 10 seconds that the main unit is connected to the power, turn ACC to ON,

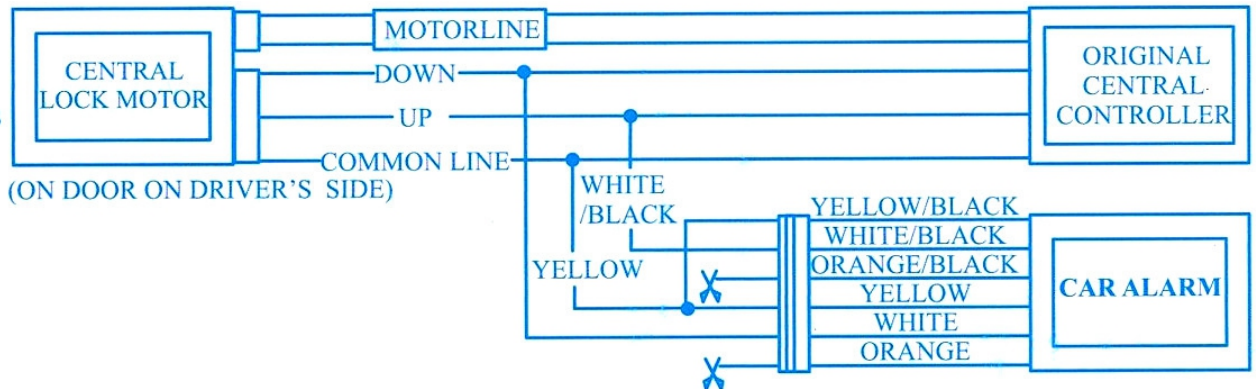
Learning code description is only useful.



Connect eight wires underlined by red. Depress "Learning button" when learning (Locking wireless frequency)

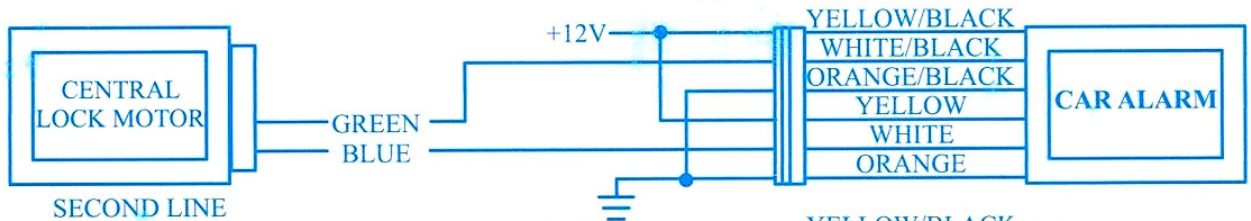
For cars equipped with central lock and lock motor on driver's side door

FIG1



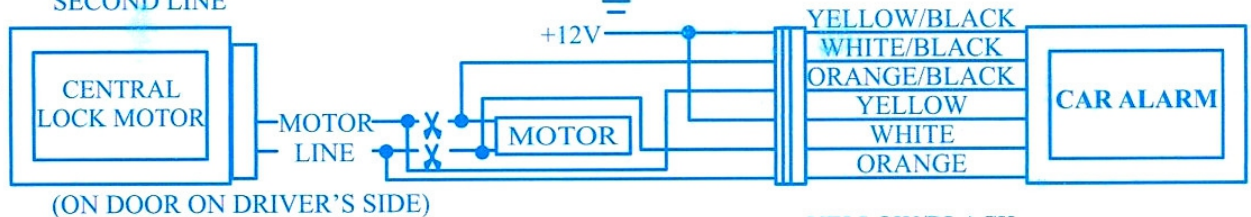
For cars equipped with central lock but no motor on driver's side, add master motor and rod.

FIG2



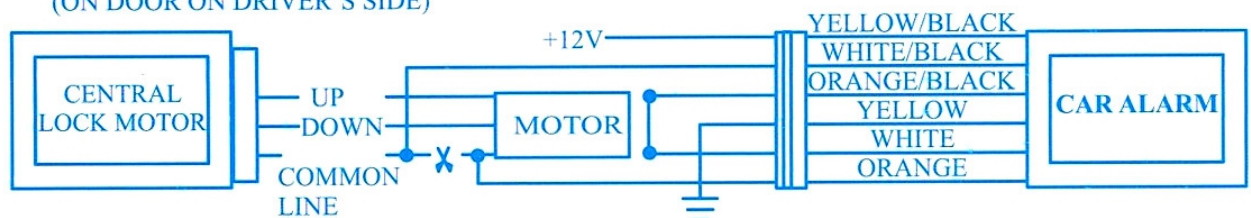
For cars equipped with central lock and a control switch on the driver's side.

FIG3



For cars equipped with air compressor controlled central door locks. Eg Audi, VW, Mercedes.

FIG4



There is no meaningful information. Do not get stuck here.